

SIMPLE WESTERN CERTIFIED ANTIBODY DATASHEET

[View
Antibody Link](#)

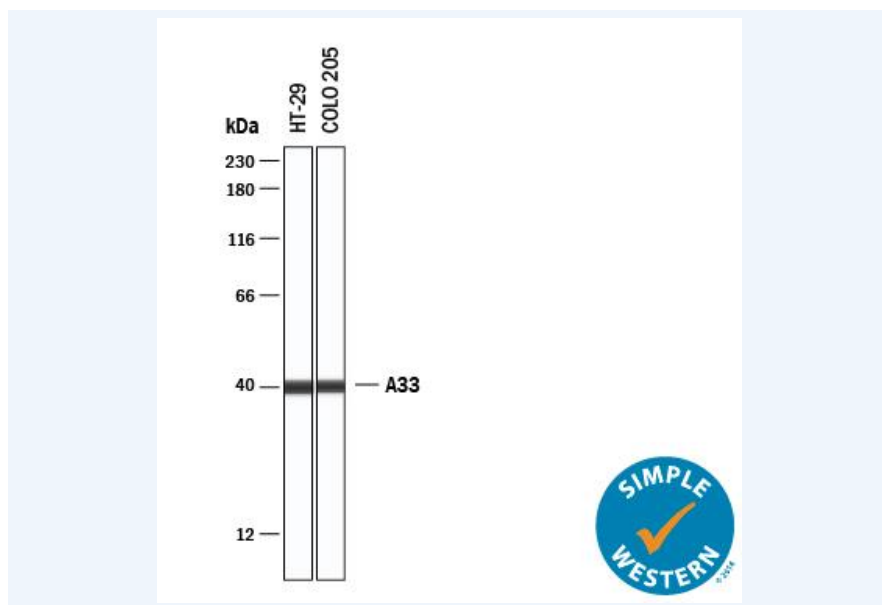


Figure: Simple Western lane view shows lysates of HT-29, COLO 205, loaded at 0.2-mg/mL. A specific band was detected for A33 at approximately 40-kDa (as indicated) using 50- μ g/mL of Mouse Anti-Human A33 Monoclonal Antibody (Catalog # MAB30802). This experiment was conducted under reducing conditions and using the 12-230 kDa separation system.

PROTEIN TARGET/ANTIBODY	
Protein Target	A33
Protein Isoform	
Antibody Type	Primary
Host Species/Clonality	Mouse Monoclonal
ASSAY	
Sample Type	HT-29, COLO 205
Sample Concentration	0.1-1.0 mg/ml
Recommended Antibody Concentration/Dilution	50 ug/ml
Antibody Diluent	Antibody Diluent 2
Detection Mode	Chemiluminescence
Separation Type	Size
Matrix	12-230 kDa
Observed kDa	40

This antibody is validated for Gel-Free, Blot Free, Hands Free Simple Western Systems. To learn about Simple Western Systems, available Simple Western antibodies, or new antibody submissions visit the links below. For additional information, please contact support@proteinsimple.com.

[Simple Western Systems](#)

[Simple Western Antibody Database](#)

[Simple Western Antibody Submission](#)